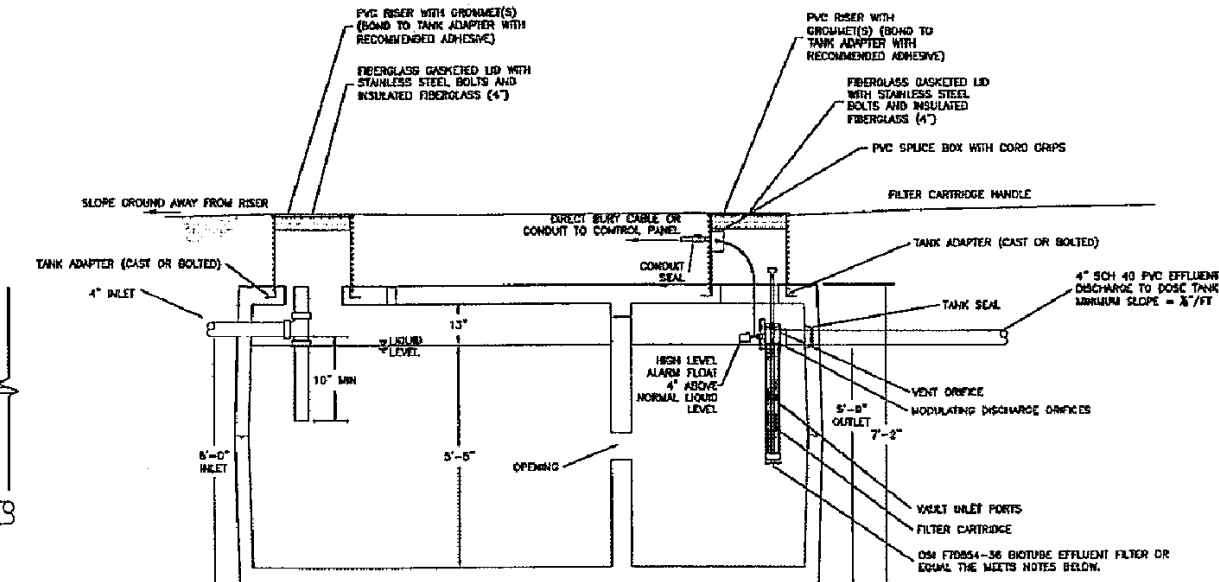
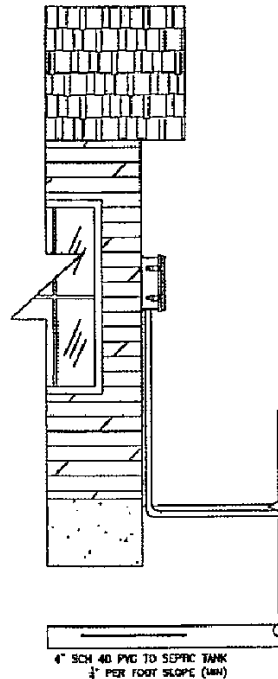


NOT IN CONTRACT

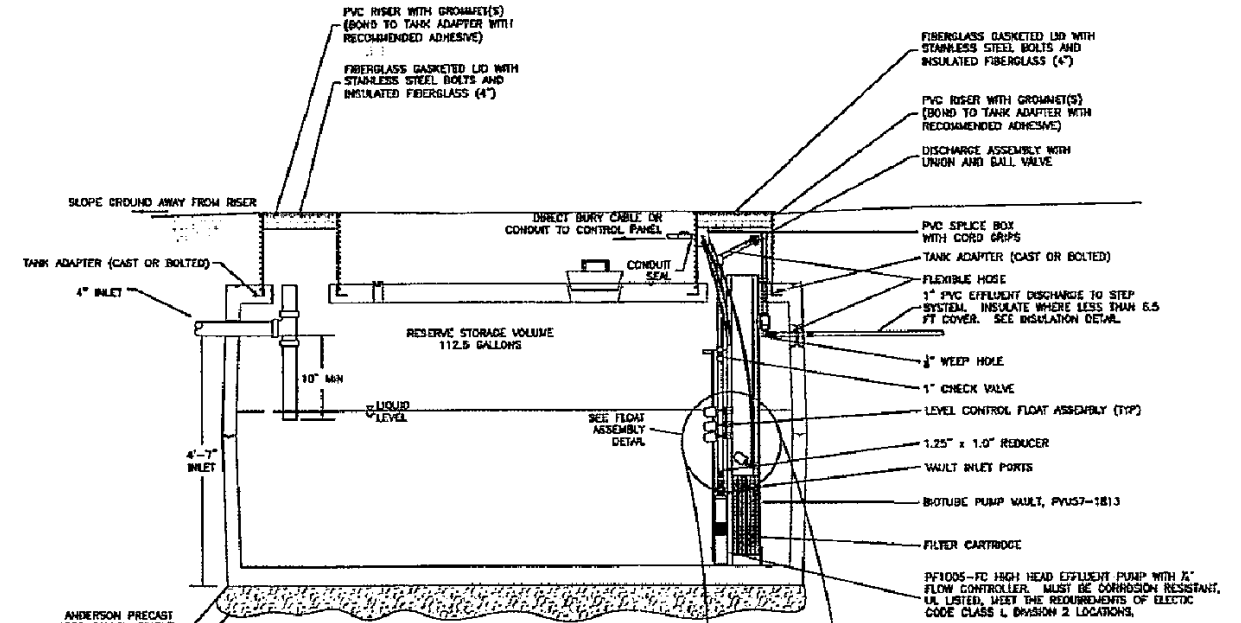
COMPONENTS ON THIS SHEET ARE TO DEMONSTRATE THE HOMEOWNERS REQUIREMENTS FOR SEWER STEP SYSTEM. INSTALLING CONTRACTOR SHALL OBTAIN A MADISON COUNTY SEPTIC SYSTEM PERMIT PRIOR TO INSTALLATION.

NOTES:

1. MAINTAIN MINIMUM 10' SEPARATION BETWEEN SEPTIC TANK/DOSING TANK AND STRUCTURES
2. MAINTAIN MINIMUM 50 FEET FROM SEPTIC/DOSING TANK AND WELLS
3. DOSE PUMP SHALL BE DESIGNED BY AN ENGINEER, WITH A MINIMUM OF 3 FLOATS: PUMP OFF, PUMP ON, AND HIGH WATER ALARM.
4. MAINTAIN MINIMUM 50 FEET SEPARATION BETWEEN SEPTIC TANK/DOSING TANK AND SURFACE WATER AND/OR WETLANDS



- EFFLUENT FILTER:**
- 1) EFFECTIVE OPENING NO GREATER THAN 1/8"
 - 2) MIN CLEAR WATER FLOWRATE OF 4.2 GPM
 - 3) PREVENT SOLIDS > 1/8" FROM PASSING THROUGH
 - 4) ALL EFFLUENT MUST GO THROUGH THE FILTER
 - 5) HIGH WATER ALARM MUST BE PROVIDED
 - 6) FILTER HANDLE TO EXTEND TO GROUND SURFACE
 - 7) MUST HAVE PROCESS CONTROLLED FILTER OPENINGS
 - 8) FILTER MATERIAL MUST BE CORROSION RESISTANT
 - 9) FILTER MUST MEET ANSI/NSF STANDARD 42
 - 10) OSM MANUAL MUST BE PROVIDED



- EFFLUENT FILTER:**
- 1) EFFECTIVE OPENING NO GREATER THAN 1/8"
 - 2) MIN CLEAR WATER FLOWRATE OF 4.2 GPM
 - 3) PREVENT SOLIDS > 1/8" FROM PASSING THROUGH
 - 4) ALL EFFLUENT MUST GO THROUGH THE FILTER
 - 5) HIGH WATER ALARM MUST BE PROVIDED
 - 6) FILTER HANDLE TO EXTEND TO GROUND SURFACE
 - 7) MUST HAVE PROCESS CONTROLLED FILTER OPENINGS
 - 8) FILTER MATERIAL MUST BE CORROSION RESISTANT
 - 9) FILTER MUST MEET ANSI/NSF STANDARD 42
 - 10) OSM MANUAL MUST BE PROVIDED

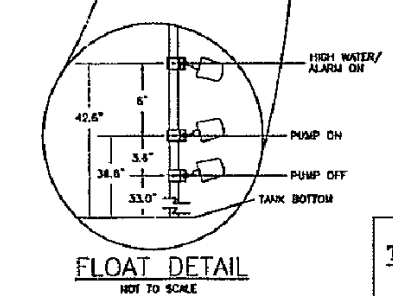
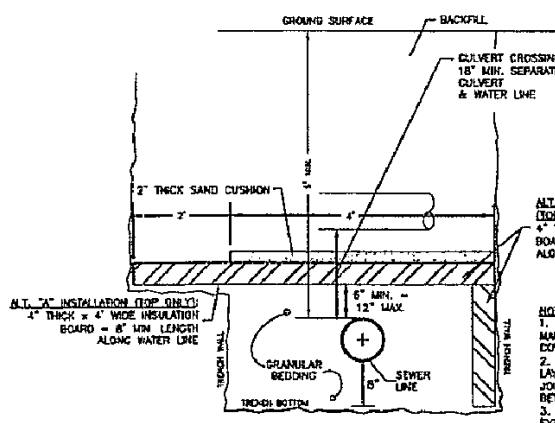
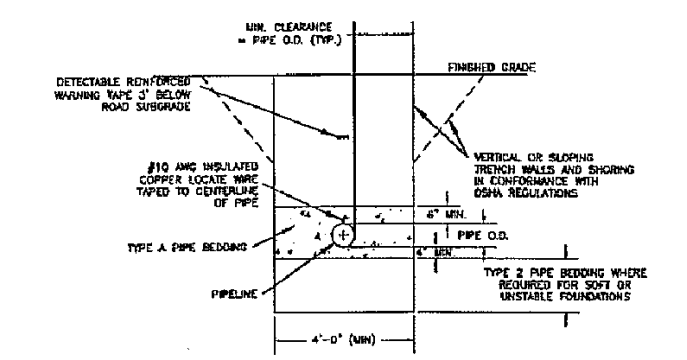
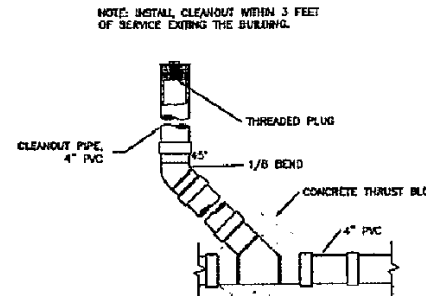


TABLE D-1-1

SPECIFIED	MAX	MAX
LOT #	FEET/INCH	THICKNESS
37	ORENCO HIGH HEAD PF1005-FC	11.4 29.8
45	ORENCO HIGH HEAD PF1005-FC	10.2 74.0
46	ORENCO HIGH HEAD PF1005-FC	11.0 43.8
47	ORENCO HIGH HEAD PF1005-FC	11.7 17.4

DETAIL PROVIDED BY: MORRISON MAIERLE, INC.

DETAIL NO.:
BSWSD:
27-17

**BIG SKY WSD 363
STANDARD DRAWING**

SCALE:
NONE

**SPANISH PEAKS
"STEP" INSTALLATION
PLAN SHEET-
PHASE 2**

DATE:
JUNE 2010

LAST REVISION:
JUNE 7, 2010

CROSS REFERENCE WITH:
N/A