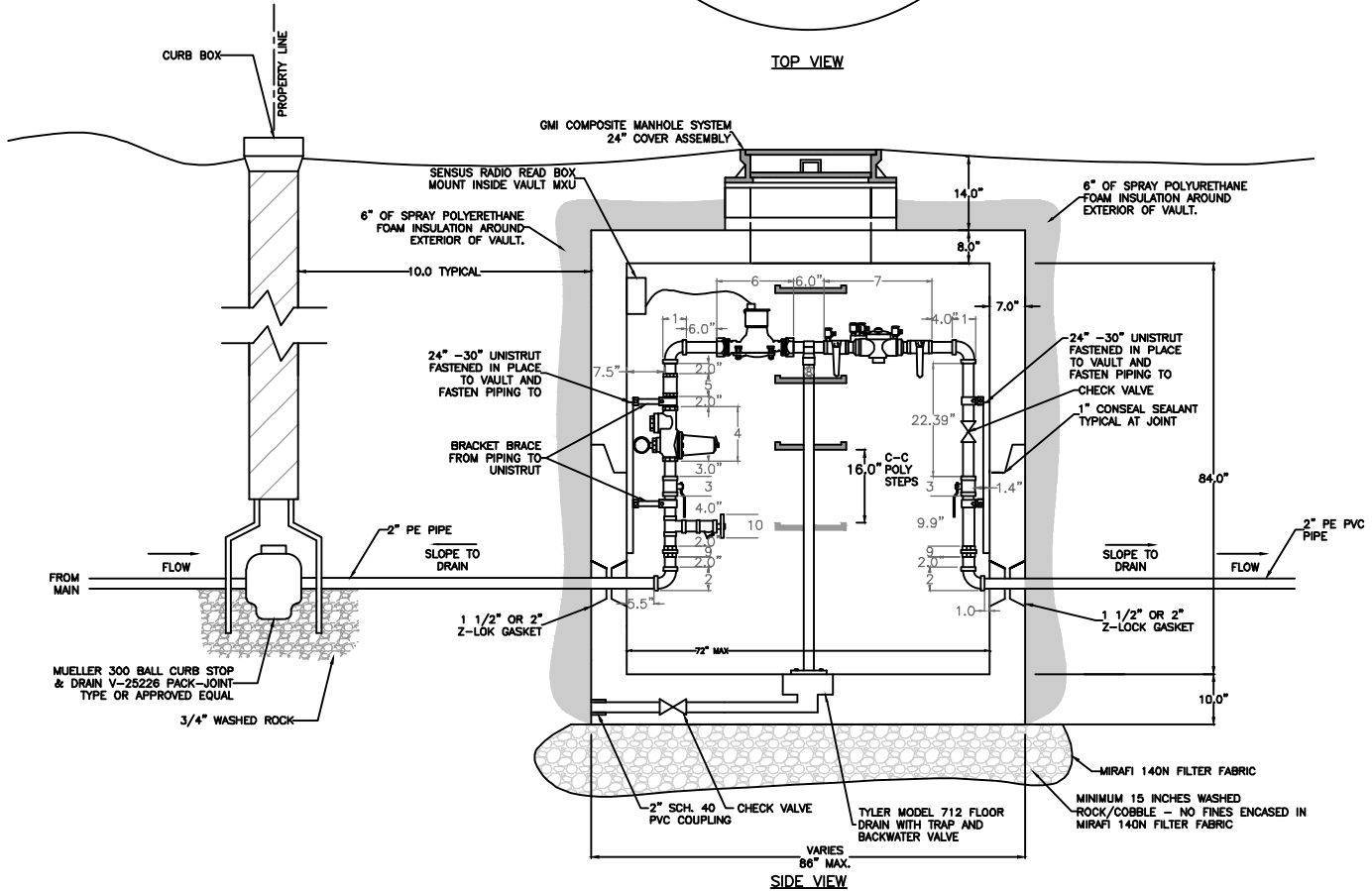


TOP VIEW



SIDE VIEW

**ITEM DESCRIPTION**

1. 2" MUELLER OR FORD 90° ELBOW (3.0" LONG)
2. 2" MUELLER P15533 PACK JOINT CONNECTION 90° ELBOW (3.0" LONG)
3. WATTS WBV-3 BALL VALVE (3.9" LONG)
4. WATTS SERIES S5B-PRV (10.875" LONG)
5. MUELLER SERIES 600 BRONZE - SINGLE CHECK VALVE (4.5" LONG)
6. WATTS BRONZE METER FLANGE (15.25" LONG)
7. WATTS SERIES 009 REDUCED PRESSURE ASSEMBLY (21.375" LONG)
8. STANDON S92-02 SADDLE SUPPORT
9. 2" MUELLER BRONZE PIPE UNION (2.5" LONG)
10. 2" "T" WITH 1"-2" BALL/GATE VALVE HOSE BIB (3.9" LONG)

**NOTES:**

- A. 6" DIAMETER IRRIGATION WATER VAULT BY ANDERSON PRE-CAST OF BOZEMAN OR BSWSD APPROVED EQUAL
- B. MANUFACTURED TO ASTM C-478
- C. RECESSED LIFTING POINTS IN ALL SECTIONS
- D. MONOLITHIC TOP/BASE WITH WALLS
- E. Z-LOK GASKETS TO FIT 1 1/2" OR 2" DIAMETER PIPE
- F. M-A INDUSTRIES MANHOLE STEPS
- G. GMI COMPOSITE MANHOLE COVER
- H. CEMENT IS TYPE V
- I. ALL CONCRETE IS 4500 PSI WITH 5% AIR ENTRAINMENT

**VAULT PIPING**

- 2" SCHEDULE 40 BRASS PIPE 230

**VAULT FITTINGS**

- THREADED/FLANGED IPS - BRASS OR BRONZE

**VAULT PIPING ANCHORS**

- UNISTRUT 1 1/2" - METAL FRAMING SYSTEM COMPONENTS
- UNISTRUT CUSH - A CLAMP ASSEMBLY PIPE/TUBE CLAMPS

**NOTE:**

OPTIONAL 2" PE IRRIGATION SERVICE PIPE STUB FOR 2-1/8" MUELLER OR MAINGUARD #77 POST-TYPE BLOW-OFF HYDRANT OR BSWSD APPROVED EQUAL (INSTALL ON VERTICAL ON THE INLET SIDE)

DETAIL NO.:

BSWSD:  
26-29

**BIG SKY WSD 363  
STANDARD DRAWING**

SCALE:  
NONE

**LARGE IRRIGATION  
WATER VAULT - VERTICAL  
PLUMBING INSTALLATION**

DATE:

FEBRUARY 2010

LAST REVISION:

MARCH 2016

CROSS REFERENCE WITH:

N/A