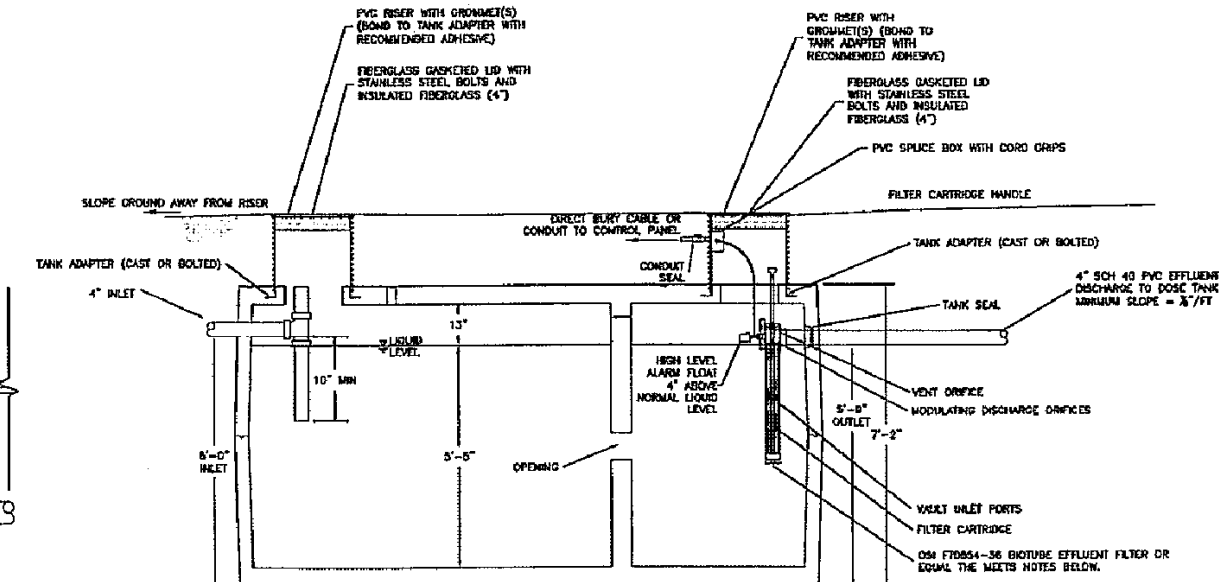
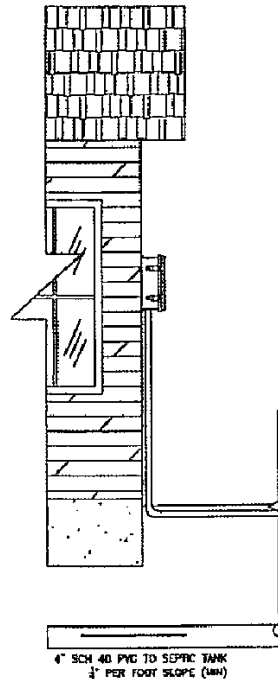


NOT IN CONTRACT

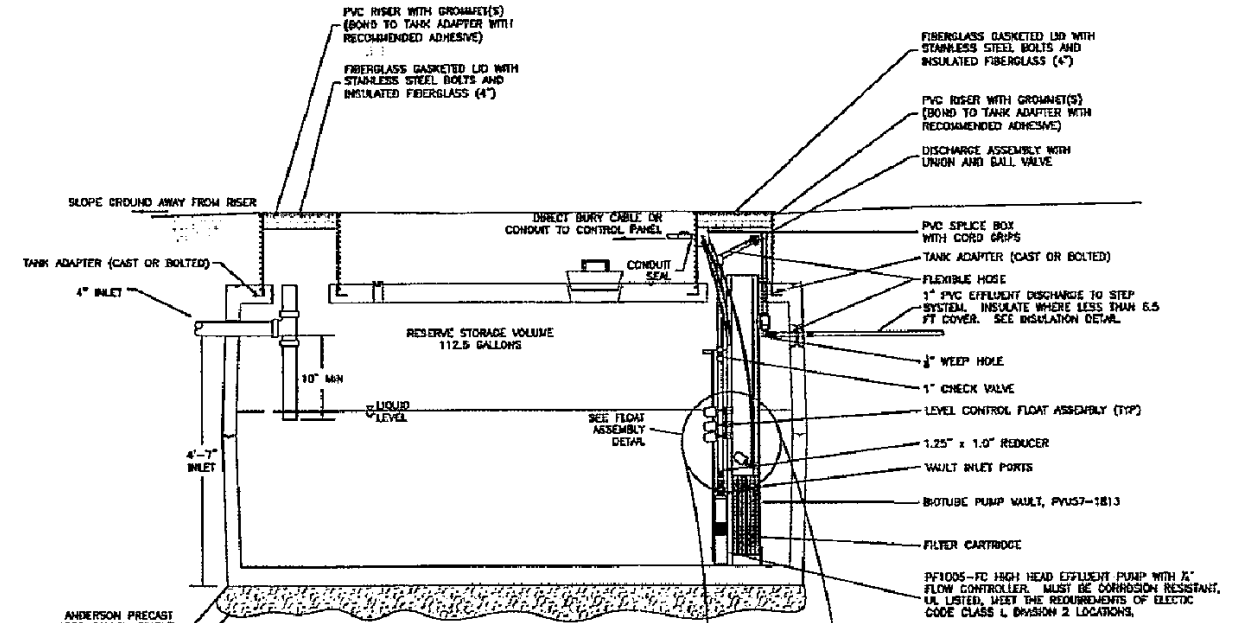
COMPONENTS ON THIS SHEET ARE TO DEMONSTRATE THE HOMEOWNERS REQUIREMENTS FOR SEWER STEP SYSTEM. INSTALLING CONTRACTOR SHALL OBTAIN A MADISON COUNTY SEPTIC SYSTEM PERMIT PRIOR TO INSTALLATION.

NOTES:

1. MAINTAIN MINIMUM 10' SEPARATION BETWEEN SEPTIC TANK/DOSING TANK AND STRUCTURES
2. MAINTAIN MINIMUM 50 FEET FROM SEPTIC/DOSING TANK AND WELLS
3. DOSE PUMP SHALL BE DESIGNED BY AN ENGINEER, WITH A MINIMUM OF 3 FLOATS: PUMP OFF, PUMP ON, AND HIGH WATER ALARM.
4. MAINTAIN MINIMUM 50 FEET SEPARATION BETWEEN SEPTIC TANK/DOSING TANK AND SURFACE WATER AND/OR WETLANDS



- EFFLUENT FILTER:**
- 1) EFFECTIVE OPENING NO GREATER THAN 1/8"
 - 2) MIN CLEAR WATER FLOWRATE OF 4.2 GPM
 - 3) PREVENT SOLIDS > 1/8" FROM PASSING THROUGH
 - 4) ALL EFFLUENT MUST GO THROUGH THE FILTER
 - 5) HIGH WATER ALARM MUST BE PROVIDED
 - 6) FILTER HANDLE TO EXTEND TO GROUND SURFACE
 - 7) MUST HAVE PROCESS CONTROLLED FILTER OPENINGS
 - 8) FILTER MATERIAL MUST BE CORROSION RESISTANT
 - 9) FILTER MUST MEET ANSI/NSF STANDARD 42
 - 10) OSM MANUAL MUST BE PROVIDED



- EFFLUENT FILTER:**
- 1) EFFECTIVE OPENING NO GREATER THAN 1/8"
 - 2) MIN CLEAR WATER FLOWRATE OF 4.2 GPM
 - 3) PREVENT SOLIDS > 1/8" FROM PASSING THROUGH
 - 4) ALL EFFLUENT MUST GO THROUGH THE FILTER
 - 5) HIGH WATER ALARM MUST BE PROVIDED
 - 6) FILTER HANDLE TO EXTEND TO GROUND SURFACE
 - 7) MUST HAVE PROCESS CONTROLLED FILTER OPENINGS
 - 8) FILTER MATERIAL MUST BE CORROSION RESISTANT
 - 9) FILTER MUST MEET ANSI/NSF STANDARD 42
 - 10) OSM MANUAL MUST BE PROVIDED

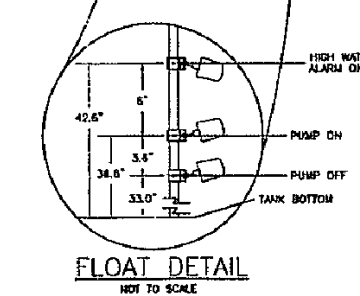
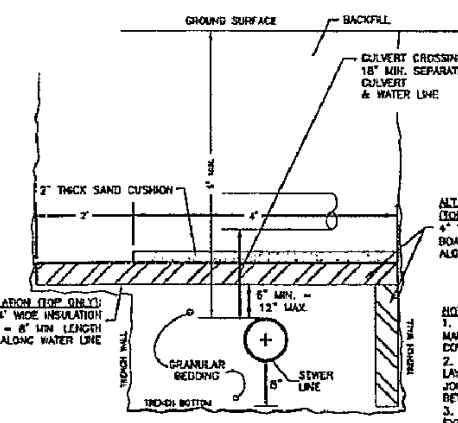
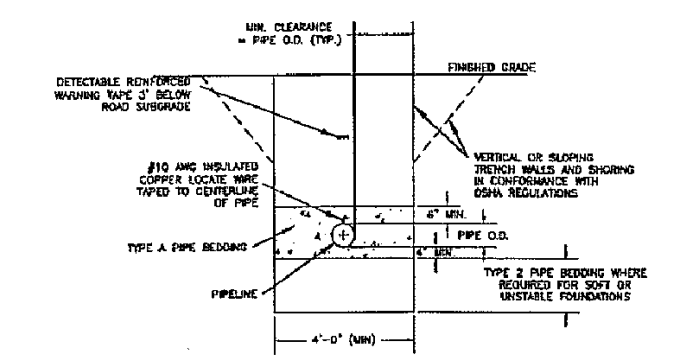
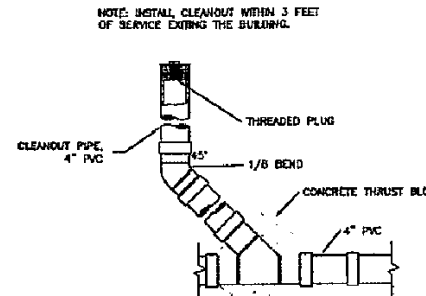


TABLE D-1-1

LOT #	SPECIFIED EFFLUENT PUMP	MAX (GPM)	MAX (INCHES)
37	ORCEND HIGH HEAD PF1005-FC	11.4	29.8
45	ORCEND HIGH HEAD PF1005-FC	10.2	74.0
46	ORCEND HIGH HEAD PF1005-FC	11.0	43.8
47	ORCEND HIGH HEAD PF1005-FC	11.7	17.4

DETAIL PROVIDED BY: MORRISON MAIERLE, INC.

DETAIL NO.:	BIG SKY WSD 363 STANDARD DRAWING	SCALE:	NONE	DATE:	JUNE 2010
BSWSD: 27-17		"STEP" INSTALLATION PLAN SHEET- PHASE 2		LAST REVISION:	JUNE 7, 2010
				CROSS REFERENCE WITH:	N/A