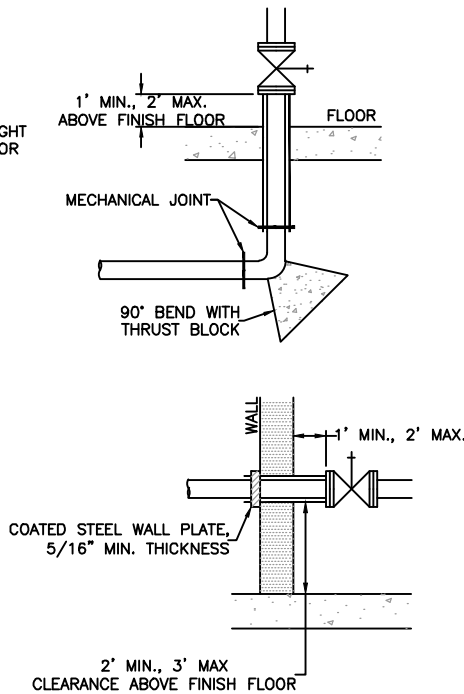


PROVIDE FLEXIBLE, WATER-TIGHT CONNECTION FOR ALL WALL OR FLOOR PIPE PREVENTION.



- BIG SKY COUNTY WATER & SEWER DISTRICT 363 REQUIREMENTS FOR INSTALLATION OF DOUBLE CHECK VALVE ASSEMBLY**
1. The FIRST fitting inside of the building shall be a UL listed flanged Kennedy or Mueller OS&Y valve the same size as the service line. Combination strainer/meter immediately following OS&Y valve or elbow attached directly to OS&Y valve -- meter must set horizontal.
  2. All Backflow Prevention Assemblies shall be:
    - 2.1. UL or FM listed
    - 2.2. Approved by the University of Southern California Foundation for Cross Connection Control and Hydraulic Research (USCFCCCHR) for operation in the proposed position (vertical or horizontal) as shown on approved plans.
    - 2.3. Installed as shown on the approved plans
  3. Horizontal installations must be a minimum of 2' above the finished floor.
  4. The service riser must be a minimum of 2' from any outside wall.
  5. The incoming fire service line shall be a minimum of 6.5', and a maximum of 8.0' below the finished grade.
  6. All service line appurtenances shall have a minimum pressure rating of 200 PSI.
  7. All service lines 4" and larger shall be Class 51 Ductile Iron Pipe.
  8. Line sizing: The Backflow Prevention Assembly and meter shall be equal in size to both the incoming pipe diameter (upstream) and outgoing pipe diameter (downstream). For example, a 4" service line shall have a 4" meter and Backflow Prevention Assembly.

DETAIL NO.:  BSWSD: 26-12	<b>BIG SKY WSD 363                  STANDARD DRAWING</b>	SCALE:  NONE	<b>WATER SERVICE LINE FOR                  SIZES 4" AND LARGER</b>	DATE: FEBRUARY 2010
				LAST REVISION: MARCH 2016
				CROSS REFERENCE WITH: SIMILAR TO: COB: 02660-12
				(Empty space)