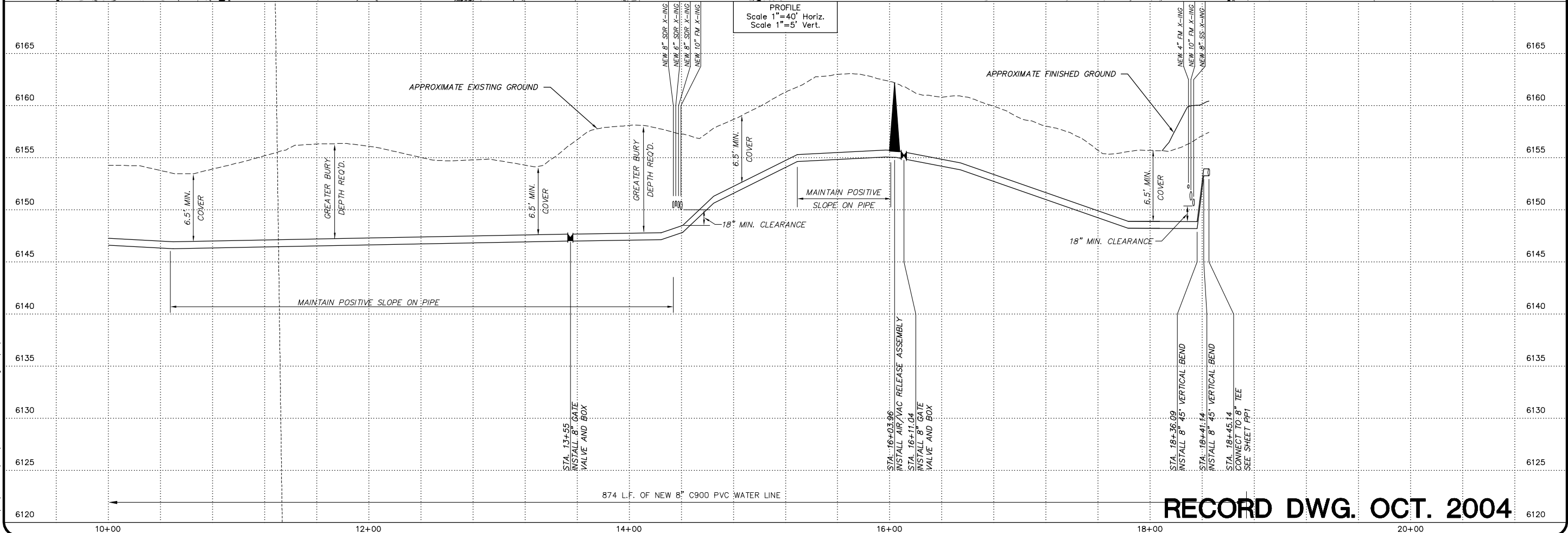
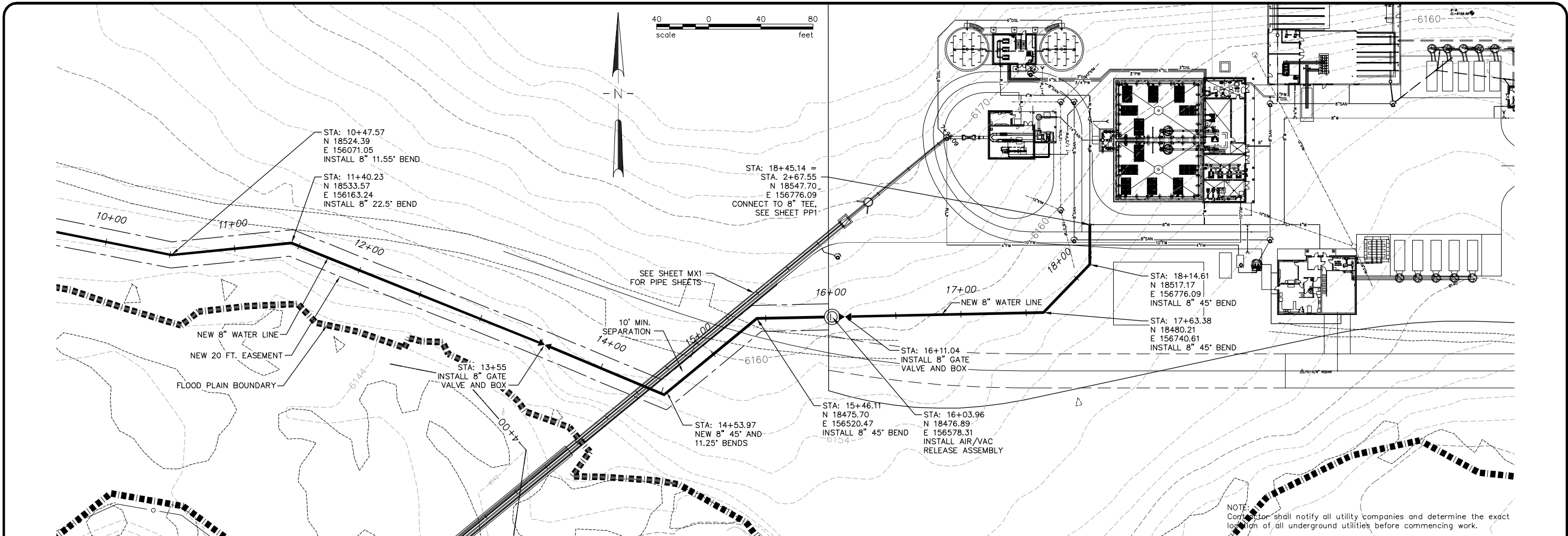
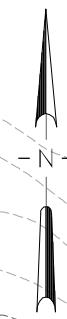


G:\08\14\357120\DWG\BASE\_HKM\_COORDS.dwg 10/13/2004 5:14:11 PM MDT



874 L.F. OF NEW 8" C900 PVC WATER LINE

NOTE: Contractor shall notify all utility companies and determine the exact location of all underground utilities before commencing work.



No.	Revision	By	Date
1	Realignment	RLA	12/10/02

WARNING: IF THIS BAR DOES NOT MEASURE 1" THEN DRAWING IS NOT TO SCALE

Project No. 6M357120 • BASE\_HKM\_COORDS.DWG • Date MAY 2002 • Designed RLA • Drawn RJA • Checked RLA • Approved RLA

**MEADOW VILLAGE WATER RECLAMATION FACILITY  
BIG SKY, MONTANA**

**NEW 8" POTABLE WATER SUPPLY LINE  
STA. 10+00 TO STA. 18+45.14**



**HKM Engineering Inc.**  
 Granite Tower Building  
 222 N. 32nd St., Suite 700  
 P.O. Box 31318  
 Billings, MT 59107-1318  
 (406) 656-6399, FAX (406) 656-4398



Sheet No.  
**PP12**

**RECORD DWG. OCT. 2004**